

SLIDE OVERVIEW – THE LITURGICAL YEAR TE TAU ONA RITENGA TAPU

The Feast of ASSUMPTION

Year 4 Resource 1

Print off this slide overview to supplement your planning.

Refer to Teacher's Notes for background information related to the resource content and suggested Teaching and Learning Experiences in the Teacher's book or in the Teacher's material under Resource Notes on the Resource Home Page.

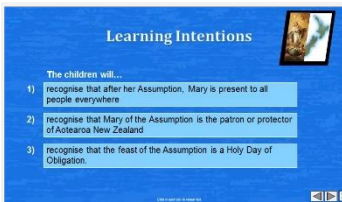
If worksheets are used in this resource these can be printed from PDF files that are available on-line in the (Lesson) Resource Documents.



Slide 1 Mary of the Assumption is the Patron of Aotearoa New Zealand

Use this slide as a focussing strategy to introduce the resource topic. Read the title together and invite children to share something they know about Mary's Assumption and this feast celebrates that Mary is the Patron and protector of Aotearoa New Zealand.

Teacher's Notes

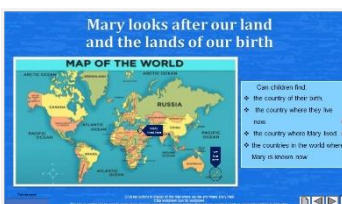


Slide 2 Learning Outcomes

Read through the Learning Intentions with the class and identify some ideas/questions that might be explored in the resource.

Sing 'O Queen of all' in class prayer this week and pray for people from different cultures in your class and your school and parish.

Teacher's Notes



Slide 3 Mary looks after our land and the lands of our birth

Adapt Teaching and Learning Experiences 1, 2.

Ask children from other cultures to find out how Mary's Assumption is celebrated in their country and share it with their class. This could be recorded and share with the school on Assumption day.

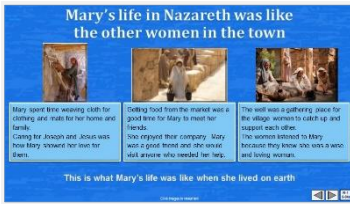
Children could ask grandparents to tell them about how Mary's Assumption was celebrated when they were children and share it with their class.

Adapt Teaching and Learning Experience 6.

Note: Assumption Day in India is very important as it coincides with the National Independence Day.

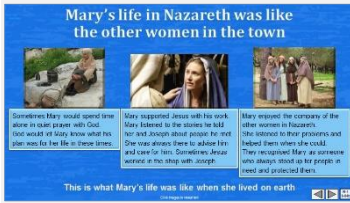
India had been taken over and governed as a colony by the English for 200 years. On August 15 1947 a man called Mahatma Gandhi restored the independence of India through the path of non-violence and self-sacrifice. This great man drew inspiration from the Gospel. Every Indian Christian has reason to celebrate Mother Mary and their Motherland India on this day.

Teacher's Notes



Slide 4a Mary's life in Nazareth was like the other women in the town
 Use the revealed text to generate discussion and questions about Mary's life. Children can create their own collage of images of Mary's life to be part of an Assumption Art Display in the church or school foyer to celebrate the feast. Add a map and flag of Aotearoa New Zealand with a caption to remind people that the feast of the Assumption is our National feast day. Children could do some research about how this feast was chosen. This could be shared and added to the art display.

Teacher's Notes



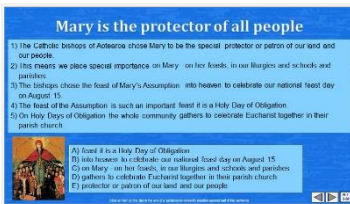
Slide 4b Mary's life in Nazareth was like the other women in the town
 Use the revealed text to generate discussion and questions about Mary's life. Children can create their own collage of images of Mary's life to be part of an Assumption Art Display in the church or school foyer to celebrate the feast. Add a map and flag of Aotearoa New Zealand with a caption to remind people that the feast of the Assumption is our National feast day. Children could do some research about how this feast was chosen. This could be shared and added to the art display.

Teacher's Notes



Slide 5 Since Mary's Assumption into heaven she is present to people everywhere
 Refer to the images of the previous 2 slides and emphasise how Mary helped people in her community. Now she is in heaven she can help people everywhere. Read through each post it note and take time to clarify the meaning of the text and invite children to ask a question or make a comment to generate discussion.

Teacher's Notes

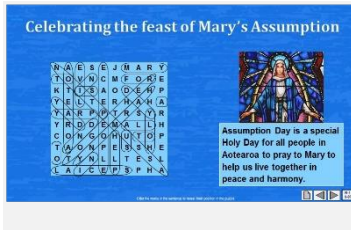


Slide 6 Mary is the protector of all people
 This art work was created by a Ukrainian painter. The writing is in Ukrainian - Can you read what it says? If you could, what do you think it would say? What are the people doing in the picture? Why?

Mary is shown as a protector, like all mothers she protects her children from harm and is concerned for them. This is why Mary was chosen to be the protector of our country. You could research who chose Mary to be the patron and protector of our country. In class prayer this week name all the things Mary could protect our country from and ask her to take your prayers to God and speak to God on your behalf. How does having Mary as your protector make you feel? Remember to ask Mary's help in class prayer when there are storms, accidents and sad things that happen.

ANSWERS 1) E, 2) C, 3) B, 4) A, 5)

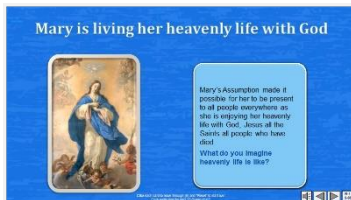
Teacher's Notes



Slide 7 Celebrating the feast of Mary's Assumption

Read the sentence in the word find under the image. Find each word in the sentence below on the matrix and highlight it in the sentence **and** in the Word-Find. Add to RE Learning Journals. Ask Mary in class prayer to help our people live together in peace and harmony with no violence.

Teacher's Notes



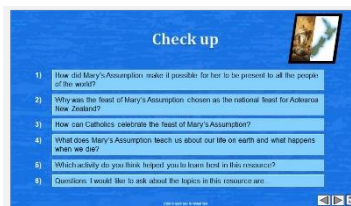
Slide 8 Mary is living her heavenly life with God

Read through each flip card – think about what the text means and respond to the question.

Sing using the MP3 'O Queen of All' This hymn could be sung at mass on Assumption Day.

Clarify the difference for the children between Christ's Ascension which was by his own power as the second person of the Holy Trinity and Mary's Assumption which Mary did not do for herself but was done for her by the power of God because of Christ's love for her as his mother. Christmas Day is the other Holy Day of Obligation.

Teacher's Notes



Slide 9 Check Up

This formative assessment strategy will help teachers to identify how well the children have achieved the Learning Intentions of the resource.

Teachers can choose how they use the slide in their range of assessment options.

A worksheet of this slide is available for children in Years 5-8 to complete.

The last two items are feed forward for the teacher.

Recording the children's responses to these items is recommended as it will enable teachers to adjust their learning strategies for future resources and target the areas that need further attention.

Teacher's Notes



Slide 10 Time for Reflection

The MP3 is played to help create a reflective atmosphere and bring the children to stillness and silence as the teacher invites them to *recall how willingly Mary responded to God's call to be the mother of his Son, Jesus. Reflect on times God has called you, through someone you know to do something special for someone else and how you have responded. Talk to*

Mary about this.

Teacher's Notes

MAP OF THE WORLD

Mary looks after our land and the lands of our birth

Please mark on the map where –

- Mary lived
- You were born
- You live now

Worksheet

Slide 3 Mary looks after our land and the lands of our birth WORKSHEET
 This worksheet relates to slide 3

Teacher's Notes

Celebrating the feast of Mary's Assumption

NAESEJMARY
 TOVNCMPORE
 KTI SAODEHP
 YELTERHAAA
 YARPPTRSYR
 YRDEMALH
 CONGOHUTOP
 TAONPESSE
 OTFNLTESL
 LAICEPSPA

Assumption Day is a special Holy Day for all people in Antigua. We pray to Mary to help us live together in peace and harmony.

How can we celebrate the Assumption of the Virgin Mary in our homes?

Worksheet

Slide 7 Celebrating the feast of Mary's Assumption WORKSHEET
 This worksheet relates to slide 7
 Find each word in the sentence below on the matrix and highlight it in the sentence **and** in the Word-Find. Add to RE Learning Journals.

Teacher's Notes